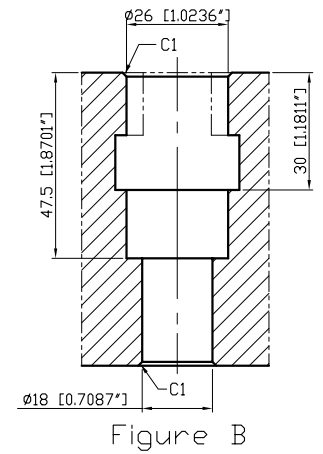
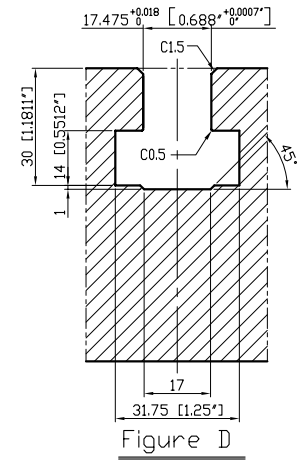
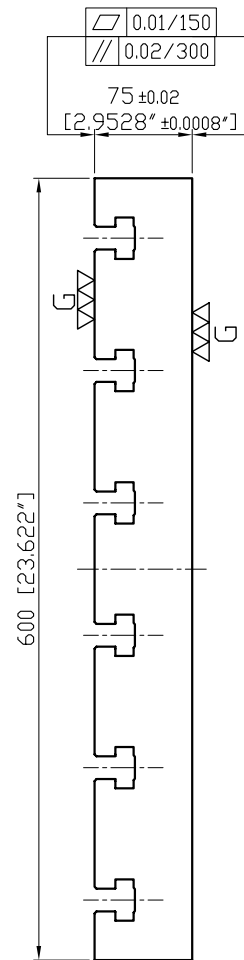


6-5/8"
Cap-Screw hole
(Figure B)



*Edge chamfered C2

Material FC300 CAST IRON		Heat treatment Annealing Process		Surface treatment		
Drafted by S.C.H	Checked by	Approved by	Scale 1/1	Date 2009.06.04	Sheet 1/1	Edition B
			TITLE M/C BASE PLATE			
			DWG.NO. 10-BP03-75600-0600-5			