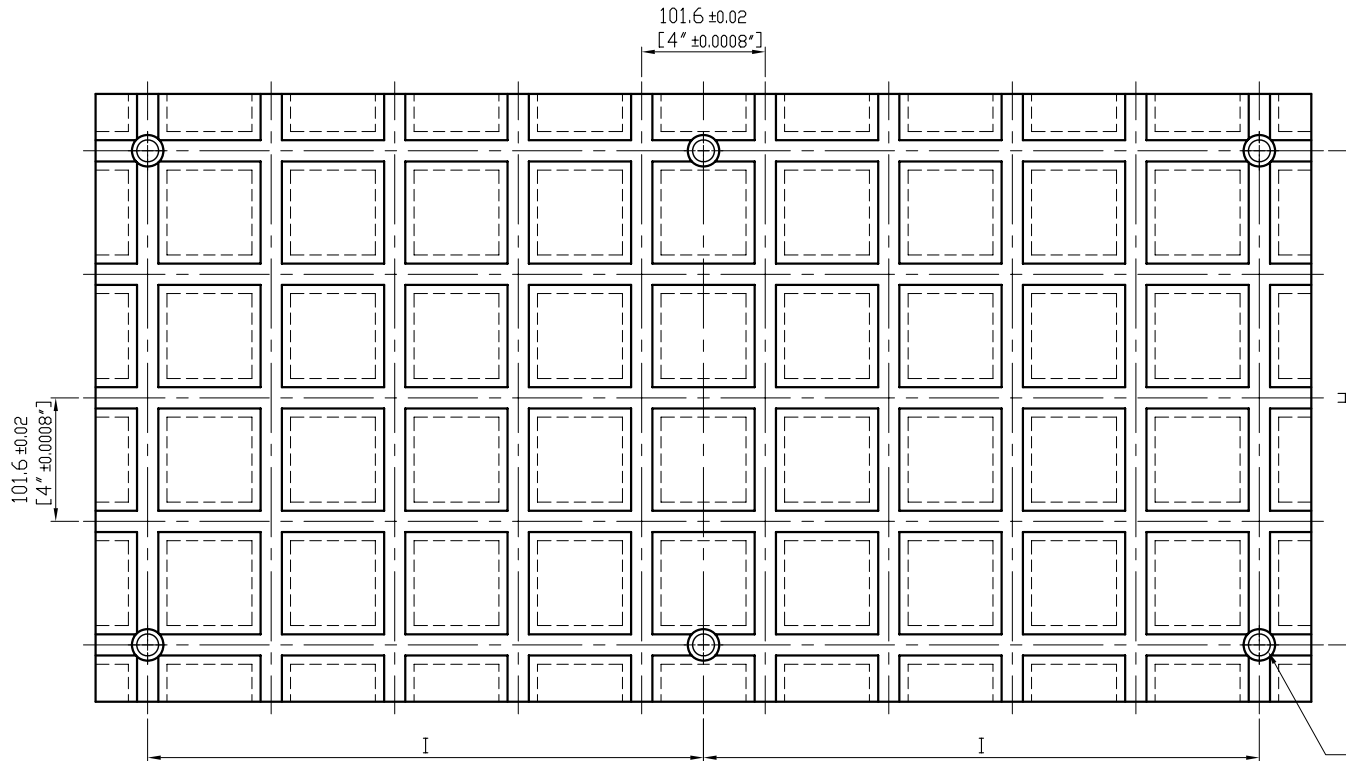


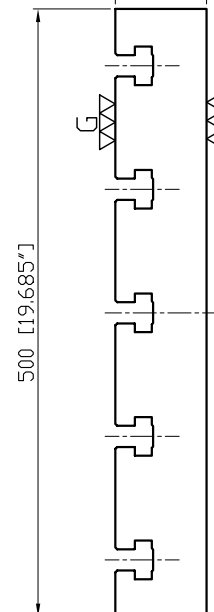
▽ (▽▽)



101.6 ± 0.02  
[4\"/>

101.6 ± 0.02  
[4\"/>

0.01/150  
0.02/300  
75 ± 0.02  
[2.9528\"/>



6-5/8\"/>

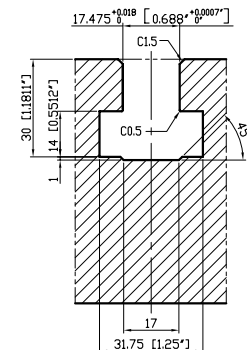


Figure D

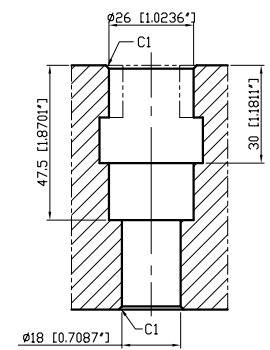
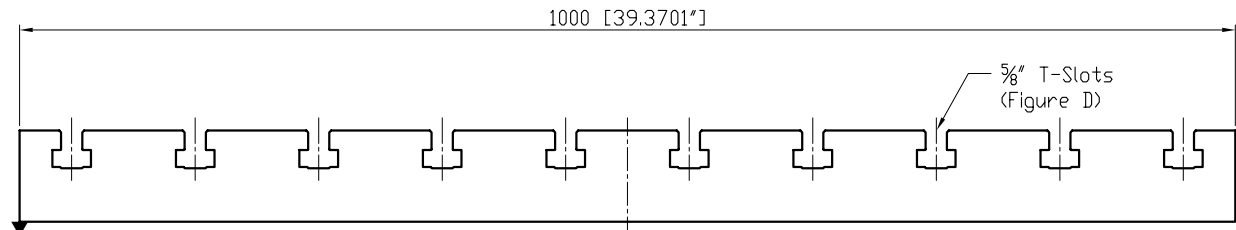


Figure B



5/8\"/>

A

\*Edge chamfered C2

Material FC300 CAST IRON		Heat treatment Annealing Process		Surface treatment			
Drafted by S.C.H	Checked by	Approved by	Scale 1/1	Date 2009.06.04	Sheet 1/1	Edition B	
			TITLE M/C BASE PLATE				
			DWG.NO. 10-BP03-75500-1000-5				